

Colgate®

blast

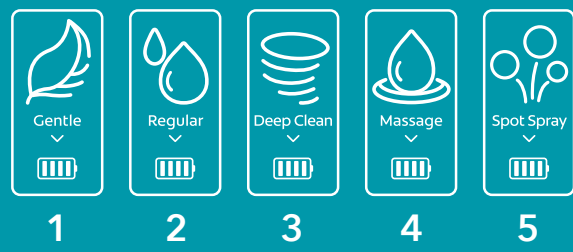
SERIES 2

Cordless Water Flosser  
let's get flossing.

User Manual

Hello Change your mode.  
Change your flow.

Choose from 5 cleaning modes for a unique flossing experience tailored to you.



- Gentle mode:**  
A mild water pressure that is suitable for sensitive teeth and first time users.
- Regular mode:**  
A standard water pressure, perfect for your everyday clean.
- Deep Clean mode:**  
A strong water pressure to level up your floss.
- Massage mode:**  
A pulsed water flow to massage the gums, while blasting away plaque.
- Spot Spray mode:**  
Allows you to control the flow of water with the touch of a button to target stubborn residue areas for a **focused precision clean**.

Personalise your flossing with nozzles designed with you in mind.

- Regular nozzle:**  
Blast away food residue, bacteria and plaque between teeth to combat tooth decay for a dentist clean feel
- Interdental nozzle:**  
Creates a unique stream pulse water flow to blast away plaque along the gum line
- Orthodontic nozzle:**  
An easy clean for those hard-to-reach areas around braces

Your oral health routine upgraded.

- Hello Interactive LED Display**  
See your mode & battery life shine on an easy-to-read display.
- Rechargeable Battery**  
Keep the flow going with up to 3 weeks battery life\*
- Water Resistant Design**
- Large, easy-to-fill 180 mL water tank**  
Removable for easy cleaning
- Up to 60 seconds of water capacity\***
- Compact, portable design**  
Easy to take your flosser with you on the go



\*when tank is full and used on regular mode.

READ ALL INSTRUCTIONS BEFORE USING  
**SAVE THESE INSTRUCTIONS**  
**IMPORTANT SAFEGUARDS:**  
When using electrical products, especially when children are present, basic safety precautions should always be followed, including the following:

**WARNING**  
Not suitable for children under 8. Keep out of reach of children. Water flossers can be used by children aged from 8 years and above and persons with reduced physical, sensory or mental capabilities or lack of experience and knowledge under supervision.

Cleaning and user maintenance shall not be made by children without supervision.

Children shall not play with the appliance. Water flossers shall be used only with cold or warm water, or specific solutions as defined in the manufacturers instructions.

Stop using this device if it is damaged in any way (USB cord, water flosser device, and/or nozzles). Use this product only for its intended use as described in this manual. Please do not use it for other purposes.

Do not use nozzles or attachments not recommended by Colgate. Do not place the product in a place with high temperature and direct sunlight. Keep the cord away from heated surfaces.

Use the charger only within rated capacity of outlets or voltages specified. Use only a certified AC adapter or other USB power source with USB outlet and output voltage rating of 5VDC and output current rating of at least 500mA.

This product can be used with mouthwash or dentist's recommended solution, but after use, wash the device thoroughly to avoid contamination of the tank and clogging of internal parts. Do not add salt, iodine, bleaching agent, or insoluble essential oils to the tank as these may affect the product performance and shorten the product life.

No user-serviceable parts. Do not disassemble the device, as it may cause personal injury or device failure. This water flosser contains Ni-MH batteries that are non-replaceable. If after using this water flosser you experience excessive bleeding or if bleeding continues to occur after a week of use, please contact your dentist as it may be an indication of a more serious oral care issue.

If you are undergoing treatment for any oral care condition, consult your dental professional prior to use. Do not place or store product where it can fall or be pulled into a tub or sink. Do not reach for a charger that has fallen into water. Unplug immediately.

AC adapters and chargers should always be completely dry when connecting to power. USB power sources must only be used in dry locations away from water. Do not charge with water in the tank. Unplug from charger before filling, do not overfill.

This device contains Ni-MH rechargeable batteries. When travelling by air, it should be carried in carry-on baggage when possible. When this device must be carried in checked baggage, it must be turned completely off, protected from accidental activation, and packed so that it is protected from damage. Do not run the device without water in the tank to avoid damage to the device.

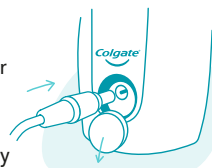
Do not aim and spray water directly under the tongue, into eyes, ears, nose, or other parts of the body. Pressure from the water stream may cause damage. Do not use this product if there is any obvious wound on your tongue or in your mouth. Remove all jewellery inserts from your mouth before you use this product.

**INSTRUCTIONS:**

**Charging the Water Flosser:**

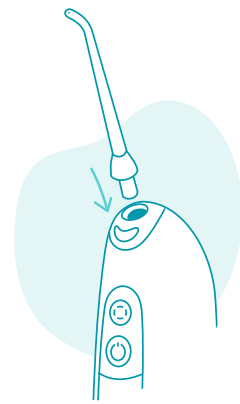
Prior to your first use, it is recommended to fully charge your device.

1. Turn the power OFF on the device.
2. Ensure the water tank is empty.
3. Insert the charging cord into the charging port.
4. Attach the USB end of the cord to an AC adapter or other power source with USB outlet. Confirm if the LED display shows a battery charging (bars flashing), or battery full icon (4 full bars).
5. Fully charge device prior to use. When charging, the LED display will show a battery charging icon. Once fully charged, the device will show a fixed four bar battery icon, and can be used for up to 3 weeks with daily use on regular mode. The LED display will show a flashing battery icon to remind you the battery is low, and requires charging.
6. The charging time from an empty battery, to full charge is approximately 4 hours.



**Inserting and Removing Nozzles:**

1. Remove the nozzle from the package.
2. Insert the nozzle into the nozzle jack until it clicks into place.
3. To remove the nozzle, press and hold the 'Smile' nozzle eject button and gently pull out the nozzle.



**Warning:**  
Do not eject the nozzle during operation.

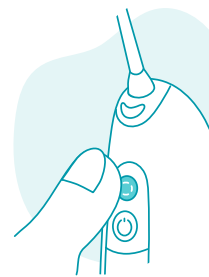


**Filling the Water Tank:**

1. Open the water tank cover.
2. Lay the flosser flat, face the opening towards the tap and fill with cold/ lukewarm water or mouthwash. You may use warm water up to 40°C/104°F.
3. After filling the tank with water, close the cover firmly, and dry off any excess liquid.

**Adjusting the Pressure Settings:**

1. Device turns on in the last mode used.
2. Press the mode button to switch between pressure settings for your preferred flossing style:  
**Gentle:** Low pressure mode.  
**Regular:** Standard pressure mode for daily cleaning.  
**Deep Clean:** Strong pressure mode for deep cleaning.  
**Massage:** pulsation pattern for gum massaging.  
**Spot Spray mode:** Control the flow of water with the touch of a button. If you have selected spot spray mode, you can control the flow of water through the On/Off button. Press and hold the On/Off button for water flow, and let go to stop water flow.
3. The default mode for the water flosser is gentle, it is recommended to start on the gentle mode and gradually increase modes if desired.

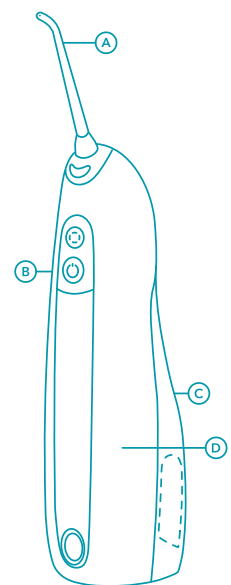


**Using the Water Flosser:**

1. Place the nozzle into your mouth before turning the device on.
2. Align the nozzle against your teeth and gum line.
3. Work the nozzle along the gumline, paying special attention to the area between teeth and around braces.
4. While flossing, open your mouth slightly to avoid water splashing.
5. Keep the flosser upright during use to prevent the tube in the tank from restricting water flow.
6. The water tank should allow for up to 60 seconds of flossing depending on the mode. Refill water tank as needed to complete flossing session.
7. After pressing the off button, the water flosser will remain in standby mode for 30 seconds. After 30 seconds in standby mode, the water flosser will turn off. After 2 minutes of flossing, the water flosser will automatically switch off.

**CLEANING INSTRUCTIONS:**

- A) Nozzle**  
Wash with water, then dry with a soft cloth or paper towel. It is recommended to replace the nozzle every 6 months. Please replace if the nozzle tip is deformed to avoid misuse or malfunction.
- B) Device**  
Make sure power is turned off, detach the charger and seal the charging port. Open the cover of the tank, pour out contents and then close. Turn on power to empty out any remaining contents, then turn off again. Wipe away any remaining liquid from the device.
- C) Water tank**  
You may also remove the tank if you wish to clean it. To do so, turn the water flosser upside down and push outwards away from the device. The first time you remove the water tank it will require more physical effort. Clean using warm water and soft cloth or paper towels and fully dry the device. To return the tank for next use, slide it back until you hear the click. It is recommended to clean the tank once a week.
- D) Tube**  
This can either be cleaned directly, or it can be removed completely from the device and washed using a clean damp cloth and warm water. To remove completely, take the water tank apart and gently pull the tube from the device. After cleaning, reinstall the tube into the device and wipe dry with a soft cloth or paper towel. Please do not bend the tube or it may result in the device malfunctioning.



**STORAGE INSTRUCTIONS AND DEVICE MAINTENANCE**

Ensure this device is empty, dried and stored without water after each use. Place in dry area with no direct exposure to sunlight. If you plan to stop using the water flosser for an extended period, we recommend that you fully charge the battery, clean the flosser device and nozzles, and store them in a cool dark place. If you start using your flosser again, after more than 3 months of non-use, fully charge the device before use.

**WARRANTY**

This product is covered by a warranty against defects for a period of 2 years from the date of original product purchase within Australia or New Zealand. This warranty is given by Colgate-Palmolive Pty Ltd and Colgate-Palmolive Ltd. In the unlikely event of failure or defects resulting from faults in materials or manufacturing arising during the warranty period, we will repair, replace or refund the goods. We will cover the cost of repair, replacement or refund and cover the postage costs associated with returning the product for assessment, as below. You will be responsible for any other costs associated with making a claim under this warranty.

To make a claim under this warranty, you must:  
- Cease using the product;  
- Contact Colgate's Consumer Information Service on 1800 802 307 (AU) or 0800 411 740 (NZ) or at www.colgatepalmolive.com.au/contact-us to obtain a reference for your claim.

(In Australia)  
Return the goods, along with a copy of your original purchase receipt showing purchase within 2 years of the current date and include your reference number, name, address and telephone/email contact to:  
Colgate-Palmolive  
Consumer Information Service  
Reply Paid 3964  
Sydney NSW 2000  
(NO POSTAGE REQUIRED)

(In New Zealand)  
Return the goods, along with a copy of your original purchase receipt showing purchase within 2 years of the current date and include your reference number, name, address and telephone number/email contact to:  
Colgate-Palmolive  
Consumer Information Service  
Free Post 55123  
PO Box 35077  
Wellington Mail Centre

Please note that the benefits provided by this warranty are in addition to other rights and remedies available to you as a consumer under applicable national laws, including the Australian Consumer Law and the New Zealand Consumer Guarantees Act. Our goods come with guarantees that cannot be excluded under the Australia Consumer Law.

**Colgate<sup>®</sup>**

**blast**

SERIES 2

**Cordless  
Water Flosser**  
let's get flossing.

User Manual

# Your oral health routine upgraded.

Hello

## Interactive LED Display

See your mode & battery life shine on an easy-to-read display.



## Rechargeable Battery

Keep the flow going with up to 3 weeks battery life\*



## Water Resistant Design



## Large, easy-to-fill 180 mL water tank

Removable for easy cleaning



## Up to 60 seconds of water capacity\*



## Compact, portable design

Easy to take your flosser with you on the go



\*when tank is full and used on regular mode.

# Hello

## Change your mode. Change your flow.

Choose from 5 cleaning modes for  
a unique flossing experience tailored to you.



1



2



3



4



5

### Gentle mode:

A mild water pressure that is suitable for sensitive teeth and first time users.

### Regular mode:

A standard water pressure, perfect for your everyday clean.

### Deep Clean mode:

A strong water pressure to level up your floss.

### Massage mode:

A pulsed water flow to massage the gums, while blasting away plaque.

### Spot Spray mode:

Allows you to control the flow of water with the touch of a button to target stubborn residue areas for a **focused precision clean**.

---

## Personalise your flossing with nozzles designed with you in mind.

### Regular nozzle



Blast away food residue, bacteria and plaque between teeth to combat tooth decay for a dentist clean feel

### Interdental nozzle



Creates a **unique stream pulse water flow** to blast away plaque along the gum line

### Orthodontic nozzle



An easy clean for those hard-to-reach areas around braces

# READ ALL INSTRUCTIONS BEFORE USING SAVE THESE INSTRUCTIONS

## IMPORTANT SAFEGUARDS:

When using electrical products, especially when children are present, basic safety precautions should always be followed, including the following:

### WARNING

Not suitable for children under 8. Keep out of reach of children.

Water flossers can be used by children aged from 8 years and above and persons with reduced physical, sensory or mental capabilities or lack of experience and knowledge under supervision.

Cleaning and user maintenance shall not be made by children without supervision.

Children shall not play with the appliance.

Water flossers shall be used only with cold or warm water, or specific solutions as defined in the manufacturers instructions.

Stop using this device if it is damaged in any way (USB cord, water flosser device, and/or nozzles).

Use this product only for its intended use as described in this manual. Please do not use it for other purposes.

Do not use nozzles or attachments not recommended by Colgate.

Do not place the product in a place with high temperature and direct sunlight.

Keep the cord away from heated surfaces.

Use the charger only within rated capacity of outlets or voltages specified.

Use only a certified AC adapter or other USB power source with USB outlet and output voltage rating of 5VDC and output current rating of at least 500mA.

This product can be used with mouthwash or dentist's recommended solution, but after use, wash the device thoroughly to avoid contamination of the tank and clogging of internal parts.

Do not add salt, iodine, bleaching agent, or insoluble essential oils to the tank as these may affect the product performance and shorten the product life.

No user serviceable parts. Do not disassemble the device, as it may cause personal injury or device failure. This water flosser contains Ni-MH batteries that are non-replaceable.

If after using this water flosser you experience excessive bleeding or if bleeding continues to occur after a week of use, please contact your dentist as it may be an indication of a more serious oral care issue.

If you are undergoing treatment for any oral care condition, consult your dental professional prior to use.

Do not place or store product where it can fall or be pulled into a tub or sink.

Do not reach for a charger that has fallen into water. Unplug immediately.

AC adapters and chargers should always be completely dry when connecting to power.

USB power sources must only be used in dry locations away from water.

Do not charge with water in the tank. Unplug from charger before filling, do not overfill.

This device contains Ni-MH rechargeable batteries. When travelling by air, it should be carried in carry-on baggage when possible. When this device must be carried in checked baggage, it must be turned completely off, protected from accidental activation, and packed so that it is protected from damage.

Do not run the device without water in the tank to avoid damage to the device.

Do not aim and spray water directly under the tongue, into eyes, ears, nose, or other parts of the body. Pressure from the water stream may cause damage.

Do not use this product if there is any obvious wound on your tongue or in your mouth.

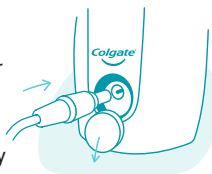
Remove all jewellery inserts from your mouth before you use this product.

## INSTRUCTIONS:

### Charging the Water Flosser:

*Prior to your first use, it is recommended to fully charge your device.*

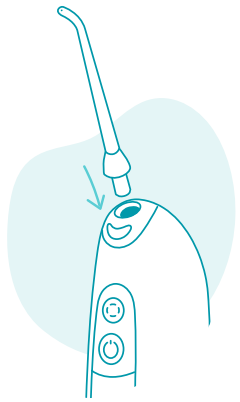
1. Turn the power OFF on the device.
2. Ensure the water tank is empty.
3. Insert the charging cord into the charging port.
4. Attach the USB end of the cord to an AC adapter or other power source with USB outlet. Confirm if the LED display shows a battery charging (bars flashing), or battery full icon (4 full bars).
5. Fully charge device prior to use. When charging, the LED display will show a battery charging icon. Once fully charged, the device will show a fixed four bar battery icon, and can be used for up to 3 weeks with daily use on regular mode. The LED display will show a flashing battery icon to remind you the battery is low, and requires charging.
6. The charging time from an empty battery, to full charge is approximately 4 hours.





## Inserting and Removing Nozzles:

1. Remove the nozzle from the package.
2. Insert the nozzle into the nozzle jack until it clicks into place.
3. To remove the nozzle, press and hold the 'Smile' nozzle eject button and gently pull out the nozzle.



### Warning:

Do not eject the nozzle during operation.

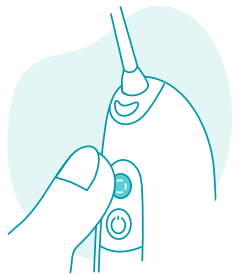


## Filling the Water Tank:

1. Open the water tank cover.
2. Lay the flosser flat, face the opening towards the tap and fill with cold/ lukewarm water or mouthwash. You may use warm water up to 40°C/104°F.
3. After filling the tank with water, close the cover firmly, and dry off any excess liquid.

## Adjusting the Pressure Settings:

1. Device turns on in the last mode used.
2. Press the mode button to switch between pressure settings for your preferred flossing style:  
*Gentle: Low pressure mode.*  
*Regular: Standard pressure mode for daily cleaning.*  
*Deep Clean: Strong pressure mode for deep cleaning.*  
*Massage: pulsation pattern for gum massaging.*  
*Spot Spray mode: Control the flow of water with the touch of a button. If you have selected spot spray mode, you can control the flow of water through the On/Off button. Press and hold the On/Off button for water flow, and let go to stop water flow.*
3. The default mode for the water flosser is gentle, it is recommended to start on the gentle mode and gradually increase modes if desired.



## Using the Water Flosser:

1. Place the nozzle into your mouth before turning the device on.
2. Align the nozzle against your teeth and gum line.
3. Work the nozzle along the gumline, paying special attention to the area between teeth and around braces.
4. While flossing, open your mouth slightly to avoid water splashing.
5. Keep the flosser upright during use to prevent the tube in the tank from restricting water flow.
6. The water tank should allow for up to 60 seconds of flossing depending on the mode. Refill water tank as needed to complete flossing session.
7. After pressing the off button, the water flosser will remain in standby mode for 30 seconds. After 30 seconds in standby mode, the water flosser will turn off. After 2 minutes of flossing, the water flosser will automatically switch off.

# CLEANING INSTRUCTIONS:

## A) Nozzle

Wash with water, then dry with a soft cloth or paper towel.

It is recommended to replace the nozzle every 6 months.

Please replace if the nozzle tip is deformed to avoid misuse or malfunction.

## B) Device

Make sure power is turned off, detach the charger and seal the charging port. Open the cover of the tank, pour out contents and then close. Turn on power to empty out any remaining contents, then turn off again.

Wipe away any remaining liquid from the device.

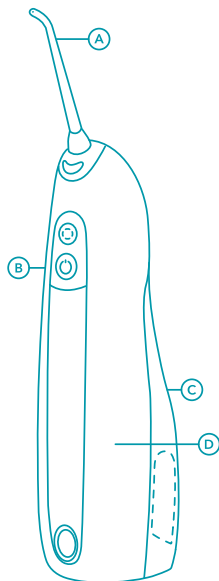
## C) Water tank

You may also remove the tank if you wish to clean it. To do so, turn the water flosser upside down and push outwards away from the device. The first time you remove the water tank it will require more physical effort. Clean using warm water and soft cloth or paper towels and fully dry the device.

To return the tank for next use, slide it back until you hear the click. It is recommended to clean the tank once a week.

## D) Tube

This can either be cleaned directly, or it can be removed completely from the device and washed using a clean damp cloth and warm water. To remove completely, take the water tank apart and gently pull the tube from the device. After cleaning, reinstall the tube into the device and wipe dry with a soft cloth or paper towel. Please do not bend the tube or it may result in the device malfunctioning.



# STORAGE INSTRUCTIONS AND DEVICE MAINTENANCE

Ensure this device is empty, dried and stored without water after each use.

Place in dry area with no direct exposure to sunlight.

If you plan to stop using the water flosser for an extended period, we recommend that you fully charge the battery, clean the flosser device and nozzles, and store them in a cool dark place. If you start using your flosser again, after more than 3 months of non-use, fully charge the device before use.

# WARRANTY

This product is covered by a warranty against defects for a period of 2 years from the date of original product purchase within Australia or New Zealand. This warranty is given by Colgate-Palmolive Pty Ltd and Colgate-Palmolive Ltd. In the unlikely event of failure or defects resulting from faults in materials or manufacturing arising during the warranty period, we will repair, replace or refund the goods. We will cover the cost of repair, replacement or refund and cover the postage costs associated with returning the product for assessment, as below. You will be responsible for any other costs associated with making a claim under this warranty.

To make a claim under this warranty, you must:

- Cease using the product;
- Contact Colgate's Consumer Information Service on 1800 802 307 (AU) or 0800 411 740 (NZ) or at [www.colgatepalmolive.com.au/contact-us](http://www.colgatepalmolive.com.au/contact-us) to obtain a reference for your claim.

-(In Australia)

Return the goods, along with a copy of your original purchase receipt showing purchase within 2 years of the current date and include your reference number, name, address and telephone/email contact to:

Colgate-Palmolive  
Consumer Information Service  
Reply Paid 3964  
Sydney NSW 2000  
(NO POSTAGE REQUIRED)

-(In New Zealand)

Return the goods, along with a copy of your original purchase receipt showing purchase within 2 years of the current date and include your reference number, name, address and telephone number/email contact to:

Colgate-Palmolive  
Consumer Information Service  
Free Post 55123  
PO Box 38077  
Wellington Mail Centre

Please note that the benefits provided by this warranty are in addition to other rights and remedies available to you as a consumer under applicable national laws, including the Australian Consumer Law and the New Zealand Consumer Guarantees Act. Our goods come with guarantees that cannot be excluded under the Australia Consumer Law.